

Granulator & Cutter GR-Series

CAST IRON HOUSING

GR80

Inlet Ø125 mm
Minimum thickness: 15 microns

GR140

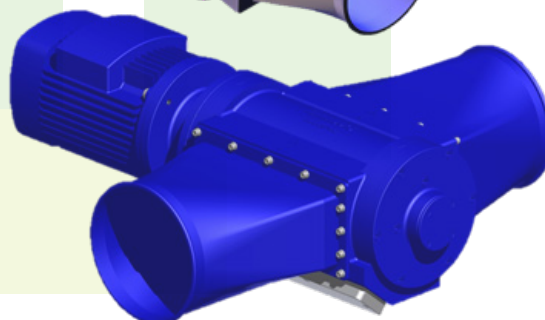
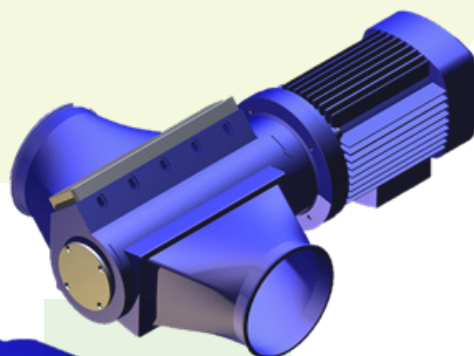
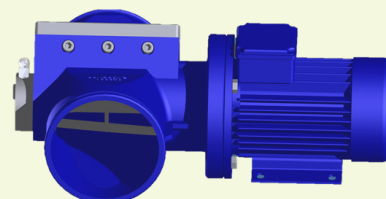
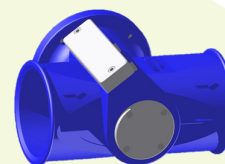
Inlet Ø160 mm
Minimum thickness: 8 microns

GR200

Inlet Ø160-250 mm
Minimum thickness: 15 microns

GR250

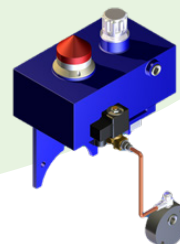
Inlet Ø200-300 mm
Minimum thickness: 20 microns



Types:

U - Standard
MS - Lubrication system
MS Coated - Lubrication system and non-stick coating
HS - Hole shield
NC - Without center axis
UW - Extra wear resistance
UT - Ultra-thin material
Rotor with 3,6,9 or 12 knives

LUBRICATION SYSTEM

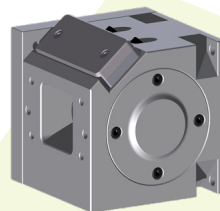


Granulator & Cutter GR-Series

STEEL HOUSING CONCEPT

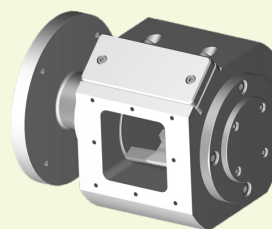
GR55

Inlet 55 x 55 mm
Minimum thickness: 8 microns



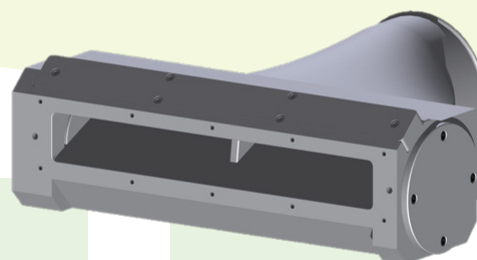
GR70

Inlet 70 x 70 mm
Minimum thickness: 10 microns



GR→800

Inlet customized to application
Minimum thickness: 20 microns



Types:

U - Standard
S - Stainless steel
NC - Without center axis
UW - Extra wear resistance
UT - Ultra-thin material
Rotor with 3,4,6,9 or 12 knives