

ALL-IN-ONE UNITS



www.lundbergtech.com

 **LUNDBERG** TECH
Our waste handling keeps production going

ADVANTAGES

- Reduced volume of waste by cutting the waste
- Reduced volume of waste by compacting the waste
- Increased machine speed as waste is no limitation
- Reduced downtime as waste handling is always ready and the process machine does not stop to removal of waste
- Reduction of manpower for waste handling as there is no manual handling of waste from machine to container
- Plug and play - easy to install
- Easy to access and moveable
- No heavy lift by personnel when handling waste material
- Cost savings in disposal of the waste
- Clean environment and no dust around the machine as the created dust is captured by vacuum system
- Less requirement for space around the machine for containers carrying waste
- Low cost for the operation and maintenance of the waste handling system
- Ability to add different numbers and sizes of granulators
- Customised to your needs by a variety of standard options



WasteTech 80

INFORMATION

WasteTech 80 All-in-one units are designed to capture, convey, cut and collect edge trim waste from 1 process machine. Disposal can be in a sack or TubeBag.

Maximum width of edge trim	Up to 2 x 40 mm (1.6")
Maximum air capacity	900 m³ / hour (530 CFM)
Maximum speed	250 m / min. (820 FPM)
Maximum pipe size	Dia. 125 mm (5") transfer
Maximum suction distance	Up to 5 m (20 feet)
Number of connected machines	1
Size (LxWxH)	1.200x700x1.850 mm (3'-11" x 2'-4" x 6'-1")
Weight	150 kg (330 lbs.)
Motor ventilator	1,1 kW (1-1/2 HP)
Power	3 Phase, 230-460V, 50-60 Hz
Sound	68-72 dB (A)
Colour	RAL5010



WasteTech 140

INFORMATION

WasteTech 140 All-in-one units are designed to capture, convey, cut and collect edge trim waste from up to 4 process machines. Configuration of granulator(s) is customised to the material and number of process machines and disposal can be in a sack, TubeBag, bigbag or compactor.

Maximum air capacity	1.600 m³ / hour (940 CFM)
Maximum pipe size	Dia. 160 mm (6") transfer
Maximum suction distance	Up to 20 m (65 feet)
Size (LxWxH)	1.700x800x2.000 mm (5'-7" x 2'-8" x 6'-7")
Weight	230kg (510 lbs.)
Motor ventilator	2,2kW / 4kW (3 HP / 5 HP)
Power	3 Phase, 230-460V, 50-60 Hz
Sound	68-72 dB (A)
Colour	RAL5010

No. of machines	1	2	3	4
Max. speed	600 m/min (1,970 FPM)	400 m/min (1,310 FPM)	250 m/min (820 FPM)	250 m/min (820 FPM)
Edge trims	2	4	6	8
Max. width	50 mm (2")	50 mm (2")	50 mm (2")	30 mm (1.2")

WasteTech 200

INFORMATION

WasteTech 200 All-in-one units are designed to capture, convey, cut and collect edge trim waste from up to 8 process machines. Configuration of granulator(s) is customised to the material and number of process machines and disposal can be in a sack, TubeBag, bigbag or compactor.

Maximum air capacity	3.000 m³ / hour (1,770 CFM)
Maximum pipe size	Dia. 200 mm (8") transfer
Maximum suction distance	Up to 30 m (100 feet)
Size (LxWxH)	2.535x1.300x3.290 mm (8'-4" x 4'-3" x 10'-10")
Weight	495 kg (1,090 lbs)
Motor ventilator	7,5 kW (10 HP)
Power	3 Phase, 230-460V, 50-60 Hz
Sound	68-72 dB (A)
Colour	RAL5010

No. of machines	1	2	3	4	5	6	7	8
Max. speed	1.200 m/min (3,940 FPM)	1.000 m/min (3,280 FPM)	900 m/min (2,950 FPM)	800 m/min (2,620 FPM)	600 m/min (1,970 FPM)	400 m/min (1,310 FPM)	300 m/min (980 FPM)	250 m/min (820 FPM)
Edge trims	2	4	6	8	10	12	14	16
Max. width	50 mm (2")	50 mm (2")	50 mm (2")	50 mm (2")	50 mm (2")	50 mm (2")	30 mm (1.2")	30 mm (1.2")



WasteTech 200

System for four slitting machines



WasteTech 400

INFORMATION

WasteTech 400 All-in-one units are designed to capture, convey, cut and collect edge trim waste from up to 16 process machines. Configuration of granulator(s) is customised to the material and number of process machines and disposal can be in a sack, TubeBag, bigbag or compactor.

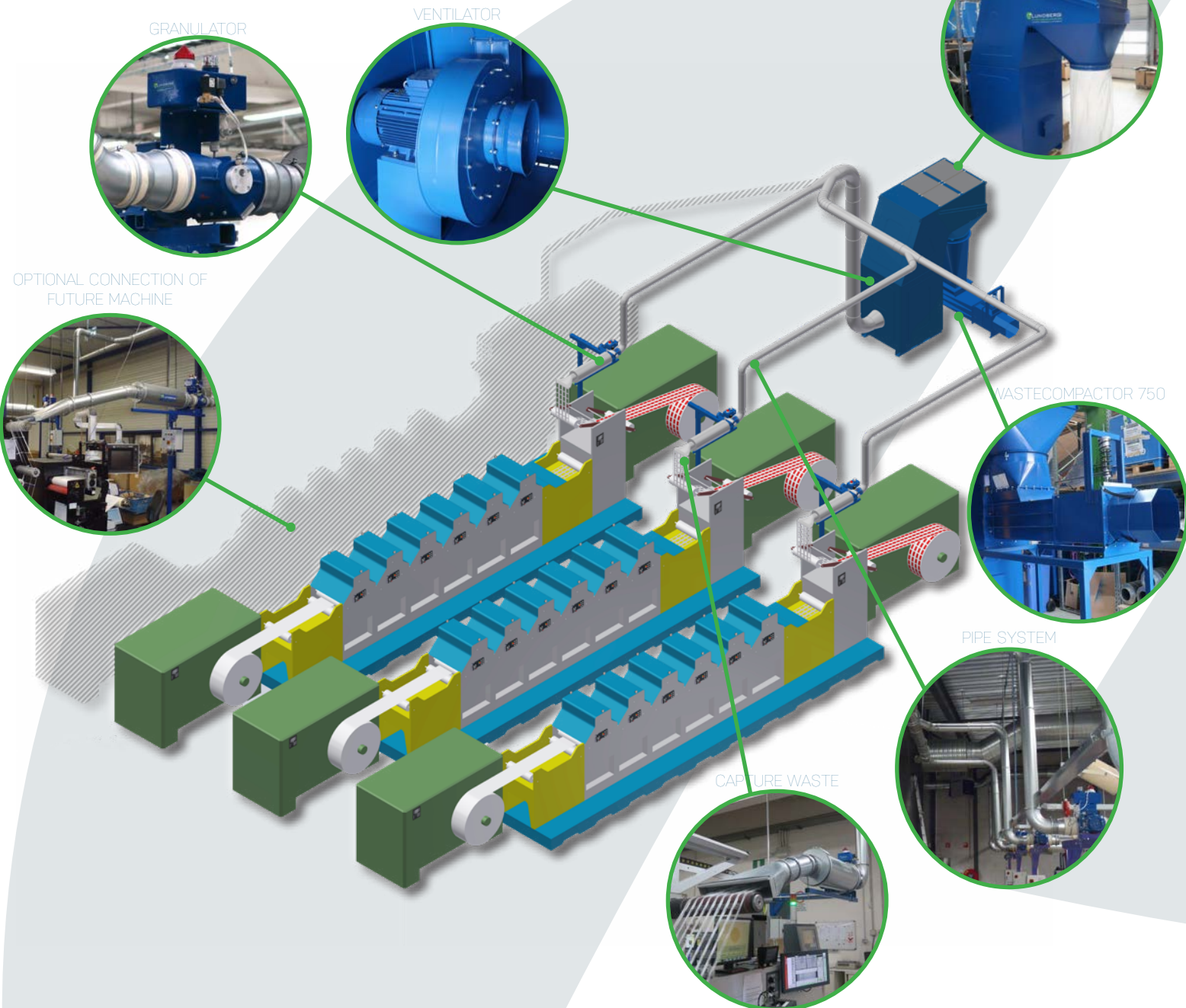
Maximum air capacity	6.000 m³ / hour (3,540 CFM)
Maximum pipe size	Dia. 315 mm (8") transfer
Maximum suction distance	Up to 30 m (100 feet)
Size (LxWxH)	2.535x1.300x3.290 mm (8'-4" x 4'-3" x 10'-10")
Weight	615 kg (1,356 lbs)
Motor ventilator	15 kW (20 HP)
Power	3 Phase, 230-460V, 50-60 Hz
Sound	68-72 dB (A)
Colour	RAL5010

No. of machines	1	4	6	8	10	12	14	16
Max. speed	2.400 m/min (7,880 FPM)	1.000 m/min (3,280 FPM)	900 m/min (2,950 FPM)	800 m/min (2,620 FPM)	600 m/min (1,970 FPM)	400 m/min (1,310 FPM)	300 m/min (980 FPM)	250 m/min (820 FPM)
Edge trims	2	8	12	16	20	24	28	32
Max. width	50 mm (2")	50 mm (2")	50 mm (2")	50 mm (2")	50 mm (2")	50 mm (2")	30 mm (1.2")	30 mm (1.2")



MatrixCompactor 400

System for three printing presses prepared for four



TrimCutter 80

INFORMATION

TrimCutter 80 is a simple All-in-one unit for removal of edge trims from 1 process machine. The unit is moveable and disposal can be in a sack or TubeBag.

Maximum width of edge trim	Up to 2 x 40 mm (1.6")
Maximum air capacity	900 m³ / hour (530 CFM)
Maximum speed	250 m / min. (820 FPM)
Maximum pipe size	Dia. 100 mm (4") transfer
Maximum suction distance	Up to 5 m (20 feet)
Number of connected machines	1
Size (LxWxH)	980 x 470 x 2.470 mm (3'-3" x 1'-7" x 8'-1")
Weight	85 kg (190 lbs.)
Motor ventilator	1,1 kW (1-1/2 HP)
Power	3 Phase, 230-460V, 50-60 Hz
Colour	RAL5010



TrimCompactor 140

INFORMATION

TrimCompactor 140 All-in-one units are designed to capture, convey, cut, collect and compact edge trim waste from up to 4 process machines. Configuration of granulator(s) is customised to the material and number of process machines.

Maximum air capacity	1.600 m³ / hour (940 CFM)
Maximum pipe size	Dia. 160 mm (6") transfer
Maximum suction distance	Up to 20 m (65 feet)
Size (LxWxH)	2.212x820x2.110 mm (6'-11" x 3'-3" x 7'-0")
Weight	680 kg (1,500 lbs.)
Motor ventilator	2,2kW (3 HP)
Motor compactor	2,2kW (3 HP)
Power	3 Phase, 230-460V, 50-60 Hz
Sound	68-72 dB (A)
Colour	RAL5010



No. of machines	1	2	3	4
Max. speed	600 m/min (1,970 FPM)	400 m/min (1,310 FPM)	250 m/min (820 FPM)	250 m/min (820 FPM)
Edge trims	2	4	6	8
Max. width	50 mm (2")	50 mm (2")	50 mm (2")	30 mm (1.2")

WasteCompactor 250

WasteCompactor 750

INFORMATION

Screw compactor with TubeBag connected in-line with an All-in-one unit and the compact design is ideal for areas with limited floor space.

	WasteCompactor 250	WasteCompactor 750
Maximum capacity	250 kg	750 kg
Compact ratio	5:1	5:1
Size (LxWxH)	2070 x 540 x 1060mm (6'-4" x 2'-7" x 2'-9")	2560 x 670 x 1090 mm (8'-2" x 2'-2" x 3'-6")
Inlet flange	430 x 580 mm (1'-5" x 1'-11")	560 x 670 mm (1'-10" x 2'-2")
Outlet	280 x 280 mm (11" x 11")	395 x 405 mm (1'-3" x 1'-4")
Motor	2,2kW (3 HP)	5,5 kW (7-1/2 HP)
Power	3 Phase, 230-460V, 50-60 Hz	3 Phase, 230-460V, 50-60 Hz
Weight	265 kg	850 kg
Colour	RAL5010	RAL5010



MatrixCompactor 140

INFORMATION

MatrixCompactor 140 All-in-one units are designed to capture, convey, cut, collect and compact adhesive matrix and edge trim waste from all process machines. They can handle matrix and edge trim from 1 process machine and if edge trim only up to 4 process machines. Configuration of granulator(s) is customised to the material and number of process machines.

Maximum width of matrix	Up to 550mm (22")
Maximum air capacity	1.600 m³ / hour (940 CFM)
Maximum speed	150 m / min (490 FPM)
Maximum pipe size	Dia. 160 mm (6") transfer
Maximum suction distance	Up to 10 m (32 feet)
Size (LxWxH)	2.212x820x2.110 mm (6'-11" x 3'-3" x 7'-0")
Weight	680 kg (1,500 lbs.)
Motor ventilator	2,2kW (3 HP)
Motor compactor	2,2kW (3 HP)
Power	3 Phase, 230-460V, 50-60 Hz
Sound	68-72 dB (A)
Colour	RAL5010

OPTIONS

It is possible to include additional options in order to dedicate the performance of the equipment and to handle various materials.

Options are also available to:

- Increase capacity
- Implement non-stop production
- Operate adhesive materials
- Connect other types of manual or automatic filters to minimize dust issues.

Lubrication system

Unique system to add silicone oil through the rotor's centre axis to lubricate knives when handling adhesive material.



Non-stick coating

Special non-stick surface inside pipe system and other parts in which the waste material is transported, to prevent adhesive material sticking to the surface.



Frequency converter

Variable speed drive to increase capacity, increase piping distance or decrease power consumption. Control the power to optimise performance.



Cartridge filter

Increased filter performance by enlarging the surface and easing the maintenance.



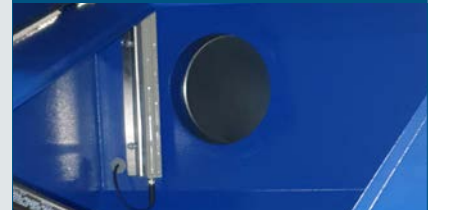
Guillotine valve

Sliding valve ideal for non-stop production. Change the sack while the process machines are in operation.



Antistatic

Neutralise static electricity on waste material when it enters the air separator.



Height extension

Increases size of sack for bigger volume. Possible to add wheels and make it moveable.



Level sensor

Gives a signal when the sack is full. Ideal when the All-in-one unit is placed in a different location than the process machines.



TubeBag

Unique clean solution for non-stop production. Continuous bags are loaded on a cassette and gives a minimum of 20 metres. When full it is closed with straps and a new bag is ready.



www.lundbergtech.com



Lundberg Tech A/S

Denmark
Tel: +45 44 98 35 85
info@lundbergtech.com
www.lundbergtech.com

Lundberg Tech Inc.

USA
Tel: +1 (302) 738 2500
us@lundbergtech.com
www.lundbergtech.com

Lundberg Tech GmbH

Germany
Tel: +49 (0)7 96 77 10 97 92
germany@lundbergtech.com
www.lundbergtech.de

Lundberg Tech UK

United Kingdom & Ireland
Tel: +44 (0) 20 38 08 63 01
uk@lundbergtech.com
www.lundbergtech.com

Lundberg Tech Benelux

Netherlands
Tel: +31 (0)6 26 46 53 68
benelux@lundbergtech.com
www.lundbergtech.nl

Lundberg Tech France

France
Tel: +33 (0)6 08 30 77 25
france@lundbergtech.com
www.lundbergtech.fr

Lundberg Tech Iberia

Spain & Portugal
Tel: +34 667 71 9797
iberia@lundbergtech.com
www.lundbergtech.es

Lundberg Tech China

China
Tel: +86 57 48 63 06 781
china@lundbergtech.com
www.lundbergtech.cn

World wide coverage. Visit our website to see local agents.