

# ALL-IN-ONE UNITS



[www.lundbergtech.com](http://www.lundbergtech.com)

 **LUNDBERG** TECH  
Our waste handling keeps production going

# ADVANTAGES

- Reduced volume of waste by cutting the waste
- Reduced volume of waste by compacting the waste
- Increased machine speed as waste is no limitation
- Reduced downtime as waste handling is always ready and the process machine does not stop to remove the waste
- Prepared for recycling
- Reduction of manpower for waste handling as there is no manual handling of waste from machine to container
- Plug and play - easy to install
- Easy to access and moveable
- No heavy lifting by personnel when handling waste material
- Cost savings in disposal of the waste
- Clean environment and no dust around the machine as the created dust is captured by a vacuum system
- Less requirement for space around the machine for containers carrying waste
- Low cost for the operation and maintenance of the waste handling system
- Ability to add different numbers and sizes of Granulators
- Customised to your needs by a variety of standard options



## WasteTech 80

WasteTech 80 All-in-one Units are designed to capture, cut, convey and collect edge trim waste from 1 process machine. Disposal can be in a bag or TubeBag.

Maximum width of edge trim	Up to 2 x 50 mm (1.6")
Maximum air capacity	900 m <sup>3</sup> / hour (530 CFM)
Maximum speed	300 m / min. (985 FPM)
Maximum pipe size	Dia. 125 mm (5") transfer
Maximum suction distance	Up to 5 m (20')
Number of connected machines	1
Size (LxWxH)	1275 x 700 x 1850 mm (4'-2" x 2'-4" x 6'-1")
Weight	150 kg (330 lbs.)
Motor ventilator	1.1 kW (1-1/2 HP)
Power	3 Phase, 230-460V, 50-60 Hz
Sound	68-72 dB (A)
Colour	RAL5010



## WasteTech 140

WasteTech 140 All-in-one Units are designed to capture, cut, convey and collect edge trim waste from up to 3 process machines. Configuration of Granulator(s) is customised to the material and number of process machines and disposal can be in a bag, TubeBag, big bag or compactor.

Maximum air capacity	1600 m <sup>3</sup> / hour (940 CFM)
Maximum pipe size	Dia. 160 mm (6") transfer
Maximum suction distance	Up to 20 m (65 feet)
Size (LxWxH)	1740 x 800 x 2000 mm (5'-8" x 2'-8" x 6'-7")
Weight	230 kg (510 lbs.)
Motor ventilator	2.2kW (3 HP)
Power	3 Phase, 230-460V, 50-60 Hz
Sound	68-72 dB (A)
Colour	RAL5010



No. of machines	1	2	3
Max. speed	600 m/min (1970 FPM)	300 m/min (985 FPM)	300 m/min (985 FPM)
Edge trims	2	4	6
Max. width	50 mm (2")	50 mm (2")	30 mm (1.2")

# WasteTech 200

WasteTech 200 All-in-one Units are designed to capture, cut, convey and collect edge trim waste from up to 7 process machines. Configuration of Granulator(s) is customised to the material and number of process machines and disposal can be in a bag, TubeBag, big bag or compactor.

Maximum air capacity	3000 m <sup>3</sup> / hour (1770 CFM)
Maximum pipe size	Dia. 200 mm (8" ) transfer
Maximum suction distance	Up to 30 m (100')
Size (LxWxH)	2540 x 1300 x 3290 mm (8'-4" x 4'-3" x 10'-10")
Weight	495 kg (1,090 lbs)
Motor ventilator	7.5 kW (10 HP)
Power	3 Phase, 230-460V, 50-60 Hz
Sound	68-72 dB (A)
Colour	RAL5010



# WasteTech 200

## System for four slitting machines



No. of machines	1	2	3	4	5	6	7
Max. speed	1000 m/min (3280 FPM)	600 m/min (1970FPM)	400 m/min (1310 FPM)	400 m/min (1310 FPM)	400 m/min (1310 FPM)	300 m/min (985 FPM)	300 m/min (985 FPM)
Edge trims	2	4	6	8	10	12	14
Max. width	50 mm (2")	50 mm (2")	50 mm (2")	30 mm (1.2")	30 mm (1.2")	30 mm (1.2")	30 mm (1.2")

## WasteTech 400

WasteTech 400 All-in-one Units are designed to capture, cut, convey and collect edge trim waste from up to 12 process machines. Configuration of Granulator(s) is customised to the material and number of process machines and disposal can be in a bag, TubeBag, big bag or compactor.

Maximum air capacity	6000 m <sup>3</sup> / hour (3540 CFM)
Maximum pipe size	Dia. 315 mm (1'-1") transfer
Maximum suction distance	Up to 30 m (100')
Size (LxWxH)	2615 x 1300 x 3330 mm (8'-7" x 4'-3" x 10'-11")
Weight	615 kg (1,356 lbs)
Motor ventilator	15 kW (20 HP)
Power	3 Phase, 230-460V, 50-60 Hz
Sound	68-72 dB (A)
Colour	RAL5010



## WasteTech 600

WasteTech 600 All-in-one Units are designed to capture, cut, convey and collect edge trim waste from up to 25 process machines. Configuration of Granulator(s) is customised to the material and number of process machines and disposal can be in a bag, TubeBag, big bag or compactor.

Maximum air capacity	10000 m <sup>3</sup> / hour (5885 CFM)
Maximum pipe size	Dia. 450 mm (18" ) transfer
Maximum suction distance	Up to 50 m (100')
Size (LxWxH)	3410 x 1395 x 3167 mm (11'-2" x 4'-7" x 10'-5")
Weight	725 kg (1,356 lbs)
Motor ventilator	30 kW (40 HP)
Power	3 Phase, 230-460V, 50-60 Hz
Sound	68-75 dB (A)
Colour	RAL5010



No. of machines	2	4	6	8	10	12
Max. speed	1000 m/min (3280 FPM)	600 m/min (1970 FPM)	400 m/min (1310 FPM)	300 m/min (985 FPM)	400 m/min (1310 FPM)	300 m/min (985 FPM)
Edge trims	4	8	12	16	20	24
Max. width	50 mm (2")	50 mm (2")	50 mm (2")	50 mm (2")	30 mm (1.2")	30 mm (1.2")

No. of machines	5	8	10	14	20	25
Max. speed	1000 m/min (3280 FPM)	500 m/min (1640 FPM)	400 m/min (1310 FPM)	500 m/min (1640 FPM)	300 m/min (985 FPM)	300 m/min (985 FPM)
Edge trims	4	16	20	28	40	50
Max. width	50 mm (2")	50 mm (2")	50 mm (2")	30 mm (1.2")	30 mm (1.2")	30 mm (1.2")

\*WasteTech 600 shown with optional WasteCompactor 750

# TrimCompactor

TrimCompactor All-in-one Units are designed to capture, cut, convey, collect and compact edge trim waste from multiple process machines. Configuration of Granulator(s) is customised to the material and number of process machines.

	<b>TrimCompactor 140</b>	<b>TrimCompactor 200</b>	<b>TrimCompactor 400</b>	<b>TrimCompactor 600</b>
Connected machines	Up to 3	Up to 7	Up to 12	Up to 25
Air capacity	1600 m <sup>3</sup> / hour (940 CFM)	3000 m <sup>3</sup> / hour (1770 CFM)	6000 m <sup>3</sup> / hour (3540 CFM)	10000 m <sup>3</sup> / hour (5885 CFM)
Maximum pipe size	Dia. 160 mm (6") transfer	Dia. 200 mm (7") transfer	Dia. 325 mm (1'-1") transfer	Dia. 450 mm (1'-6") transfer
Suction distance	Up to 10 m (20')	Up to 30 m (100')	Up to 30 m (100')	Up to 50 m (165')
Motor ventilator	2.2 kW (3 HP)	7.5 kW (10 HP)	15 kW (20 HP)	30 kW (40 HP)
Motor compactor	2.2 kW (3 HP)	2.2 kW (3 HP)	5.5 kW (7-1/2 HP)	5.5 kW (7-1/2 HP)
Power	3 Phase, 230-460V, 50-60 Hz			
Sound	68-75 dB (A)			
Colour	RAL5010			



The TrimCompactor is the obvious All-in-one Unit choice when it comes to supporting sustainability and circular economy in your production or packaging process.

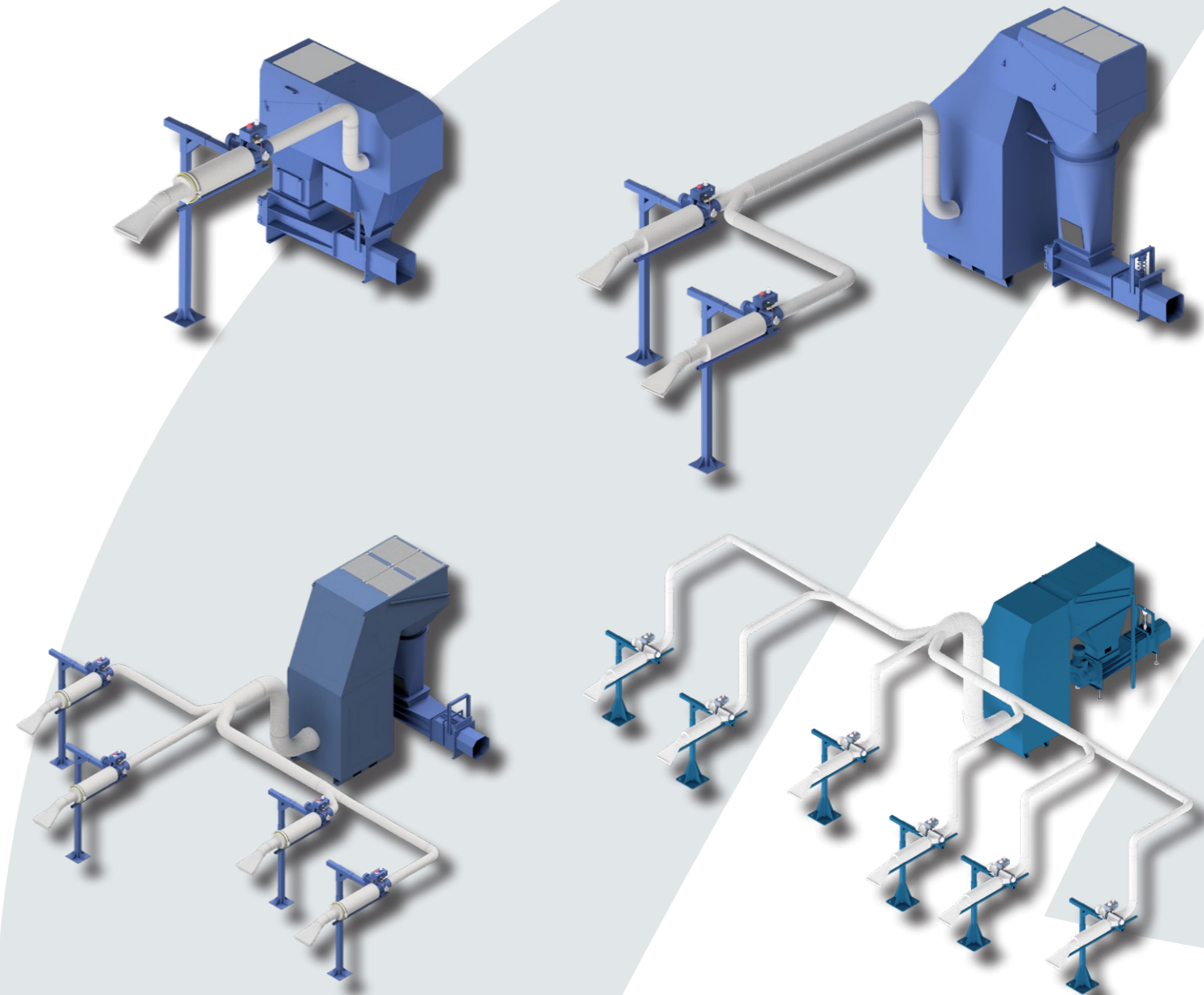
# MatrixCompactor

Units for up to six printing presses

## MatrixCompactor

MatrixCompactor All-in-one Units are designed to capture, cut, convey, collect and compact adhesive matrix and edge trim waste from presses and converting machines. They can handle matrix and edge trim from multiple machines and if edge trim only up to even more process machines. Configuration of Granulator(s) is customised to the material and number of process machines.

	<b>MatrixCompactor 140</b>	<b>MatrixCompactor 200</b>	<b>MatrixCompactor 400</b>	<b>MatrixCompactor 600</b>
Connected machines	1	Up to 2	Up to 4	Up to 6
Maximum width of matrix	Up to 430 mm (17")	Up to 670 mm (26")	Up to 670 mm (26")	Up to 670 mm (26")
Maximum speed	150 m/min (500 ft/min)	250 m/min (820 ft/min)	250 m/min (820 ft/min)	250 m/min (820 ft/min)
Air capacity	1600 m <sup>3</sup> / hour (940 CFM)	3000 m <sup>3</sup> / hour (1770 CFM)	6000 m <sup>3</sup> / hour (3540 CFM)	10000 m <sup>3</sup> / hour (5885 CFM)
Maximum pipe size	Dia. 160 mm (6" ) transfer	Dia. 200 mm (7" ) transfer	Dia. 325 mm (1'-1"") transfer	Dia. 450 mm (1'-6"") transfer
Suction distance	Up to 10 m (20')	Up to 30 m (100')	Up to 30 m (100')	Up to 50 m (165')
Motor ventilator	2.2 kW (3 HP)	7.5 kW (10 HP)	15 kW (20 HP)	30 kW (40 HP)
Motor compactor	2.2 kW (3 HP)	2.2 kW (3 HP)	5.5 kW (7-1/2 HP)	5.5 kW (7-1/2 HP)
Power	3 Phase, 230-460V, 50-60 Hz			
Sound	68-75 dB (A)			
Colour	RAL5010			



---

## TrimCutter 80

TrimCutter 80 is a simple All-in-one Unit for removal of edge trims from 1 process machine. The unit is moveable and disposal can be in a bag or TubeBag.

Maximum width of edge trim	Up to 2 x 40 mm (1.6")
Maximum air capacity	900 m <sup>3</sup> / hour (530 CFM)
Maximum speed	250 m / min. (820 FPM)
Maximum pipe size	Dia. 100 mm (4") transfer
Maximum suction distance	Up to 5 m (20 feet)
Number of connected machines	1
Size (LxWxH)	980 x 470 x 2470 mm (3'-3" x 1'-7" x 8'-1")
Weight	85 kg (190 lbs.)
Motor ventilator	1.1 kW (1-1/2 HP)
Power	3 Phase, 230-460V, 50-60 Hz
Colour	RAL5010



---

## PackTrimCutter 80

PackTrimCutter 80 is a simple All-in-one Unit for removal of edge trims from 1 process machine such as a food packaging machine. The unit is moveable and disposal is in a bag.

Maximum width of edge trim	Up to 2 x 40 mm (1.6")
Maximum air capacity	900 m <sup>3</sup> / hour (530 CFM)
Maximum speed	250 m / min. (820 FPM)
Maximum pipe size	Dia. 100 mm (4") transfer
Maximum suction distance	Up to 5 m (20 feet)
Number of connected machines	1
Size (LxWxH)	1200 x 560 x 1750 mm (3'-11" x 1'-10" x 5'-9")
Weight	135 kg (300 lbs.)
Motor ventilator	1.1 kW (1-1/2 HP)
Power	3 Phase, 230-460V, 50-60 Hz
Colour	RAL7042



---

\*PackTrimCutter shown with optional cover



## WasteCompactor

Screw compactor with TubeBag connected in-line with an All-in-one Unit. The compact design is ideal for areas with limited floor space.

	WasteCompactor 250	WasteCompactor 750	WasteCompactor 1500
Maximum capacity	250 kg / hour (550 lbs. / hour)	750 kg / hour (1650 lbs. / hour)	1500 kg / hour (3300 lbs. / hour)
Compact ratio	5:1		
Size (LxWxH)	2070 x 540 x 1060 mm (6'-4" x 2'-7" x 2'-9")	2560 x 670 x 1090 mm (8'-2" x 2'-2" x 3'-6")	2700 x 770 x 1180 mm (8'-10" x 2'-6" x 3'-10")
Inlet flange	430 x 580 mm (1'-5" x 1'-11")	560 x 670 mm (1'-10" x 2'-2")	560 x 670 mm (1'-10" x 2'-2")
Outlet	280 x 280 mm (11" x 11")	395 x 405 mm (1'-3" x 1'-4")	395 x 405 mm (1'-3" x 1'-4")
Motor	2.2 kW (3 HP)	5.5 kW (7-1/2 HP)	7.5 kW (10 HP)
Power	3 Phase, 230-460V, 50-60 Hz		
Sound	68-72 dB (A)		



## WasteTech ACE 140

WasteTech ACE 140 (Automatic Cleaning Efficiency) All-in-one Units are designed to capture, convey, cut and collect edge trim waste from up to 3 process machines afterwards the air is cleaned in the self-cleaning filter. Configuration of Granulator(s) is customised to the material and number of process machines. Disposal can be in a container, big bag or compactor.



Maximum air capacity	1600 m <sup>3</sup> / hour (940 CFM)
Maximum pipe size	Dia. 160 mm (6") transfer
Maximum suction distance	Up to 20 m (65 feet)
Size (LxWxH)	1900 x 820 x 3320 mm (6'-3" x 3'-3" x 10'-11")
Weight	680 kg (1,500 lbs.)
Motor ventilator	5.5 kW (7-1/2 HP)
Power	3 Phase, 230-460V, 50-60 Hz
Compressed air	5.5 - 6.0 bar dry air Dia. 8 mm (.315") pneumatic connection
Sound	68-72 dB (A)
Colour	RAL5010

No. of machines	1	2	3
Max. speed	600 m/min (1970 FPM)	300 m/min (985 FPM)	300 m/min (985 FPM)
Edge trims	2	4	6
Max. width	50 mm (2")	50 mm (2")	30 mm (1.2")

# OPTIONS

It is possible to include additional options to improve the capabilities of the All-in-one Unit. The options adapt the equipment usage to handle various materials.

Options are also available to:

- Increase capacity
- Implement non-stop production
- Operate adhesive materials
- Avoid static electricity
- Machine-to-machine interface using HMI
- Connect other types of manual or automatic filters to minimise dust issues

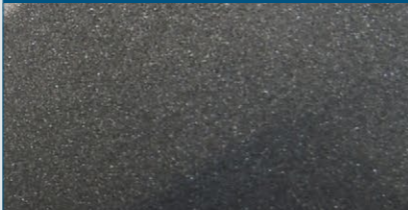
## Lubrication system

Unique system to add silicone oil through the rotor's centre axis to lubricate knives when handling adhesive material.



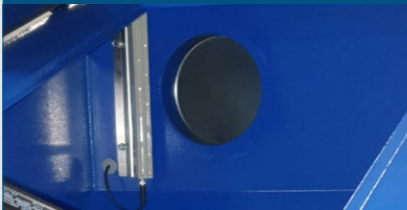
## Non-stick coating

Special non-stick surface inside pipes and other parts in which the waste material is transported, to prevent adhesive material sticking to the surface.



## Antistatic bars

Neutralise the static electricity on waste material entering the air separator.



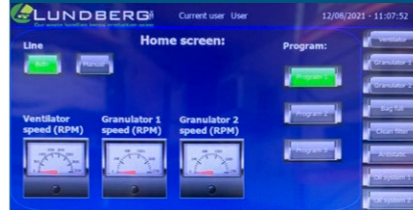
## Height extension for WasteCompactor

Increases the height of the unit and lets the compacted waste drop into a wheelly bin or container.



## IOT/HMI

Automatic control of the system. The PLC allows logging of data, easy change of settings, different warning options.



## Frequency converter

Variable speed drive to increase capacity, increase piping distance or decrease power consumption. The converter controls the power to optimise performance.



## Level sensor

Gives a signal when the bag is full. Ideal when the All-in-one Unit is placed in a different location than the process machines.



## Cartridge filter

Increased filter lifetime due to a larger filter surface area and will reduce the intervals between maintenance.



## Air balanced filterbox

Balances pressure in air separator so that the waste is disposed without pressure. Increases filter capacity by enlarging the surface and easing the maintenance.



## Automatic filter

Removes dust and particles before returning the clean air back into the building to reduce energy cost.



## Height extension

Increases the length of the bag for bigger volume. Possible to add wheels and to make it moveable.



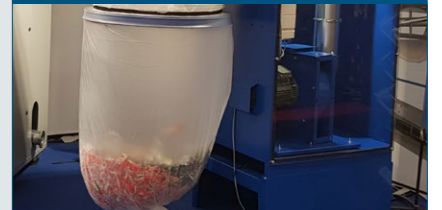
## Guillotine valve


Sliding valve which is ideal for non-stop production. Change the bag while the process machines are in operation.



## TubeBag

Unique clean solution for non-stop production. Continuous bags are loaded on a cassette and give a minimum of 20 metres. When full the bag is closed with straps and a new bag is ready.



A world map with a dark blue background. The map is centered on Europe. There are several white location pins: one in North America, one in Europe, one in Asia, and a cluster of five in Europe. A white box in the top left corner contains the website address.

[www.lundbergtech.com](http://www.lundbergtech.com)

**Lundberg Tech A/S**

Denmark  
Tel: +45 44 98 35 85  
[info@lundbergtech.com](mailto:info@lundbergtech.com)  
[www.lundbergtech.com](http://www.lundbergtech.com)

**Lundberg Tech Inc.**

USA  
Tel: +1 (302) 738 2500  
[us@lundbergtech.com](mailto:us@lundbergtech.com)  
[www.lundbergtech.com](http://www.lundbergtech.com)

**Lundberg Tech GmbH**

Germany  
Tel: +49 (0)7 96 77 10 97 92  
[germany@lundbergtech.com](mailto:germany@lundbergtech.com)  
[www.lundbergtech.de](http://www.lundbergtech.de)

**Lundberg Tech China**

China  
Tel: +86 57 48 63 06 781  
[china@lundbergtech.com](mailto:china@lundbergtech.com)  
[www.lundbergtech.cn](http://www.lundbergtech.cn)

**Lundberg Tech Benelux**

Netherlands  
Tel: +31 (0)6 26 46 53 68  
[benelux@lundbergtech.com](mailto:benelux@lundbergtech.com)  
[www.lundbergtech.nl](http://www.lundbergtech.nl)

**Lundberg Tech France**

France  
Tel: +33 (0)6 08 30 77 25  
[france@lundbergtech.com](mailto:france@lundbergtech.com)  
[www.lundbergtech.fr](http://www.lundbergtech.fr)

**Lundberg Tech Poland**

Poland  
Tel: +48 570 823 102  
[poland@lundbergtech.com](mailto:poland@lundbergtech.com)  
[www.lundbergtech.pl](http://www.lundbergtech.pl)

**Lundberg Tech Spain**

Spain & Portugal  
Tel: +34 667 71 9797  
[spain@lundbergtech.com](mailto:spain@lundbergtech.com)  
[www.lundbergtech.es](http://www.lundbergtech.es)

**Lundberg Tech UK**

United Kingdom & Ireland  
Tel: +44 (0) 20 38 08 63 01  
[uk@lundbergtech.com](mailto:uk@lundbergtech.com)  
[www.lundbergtech.com](http://www.lundbergtech.com)